

Blood Pressure Grants

Virtual Webinar and Q&A

29 April 2025

@One_Glos
www.onegloucestershire.net

One Gloucestershire Integrated Care System (ICS)



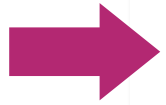
Why are we doing this?



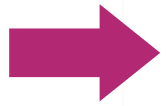
High blood pressure (hypertension) is when your overall blood pressure is always high, even when at rest.



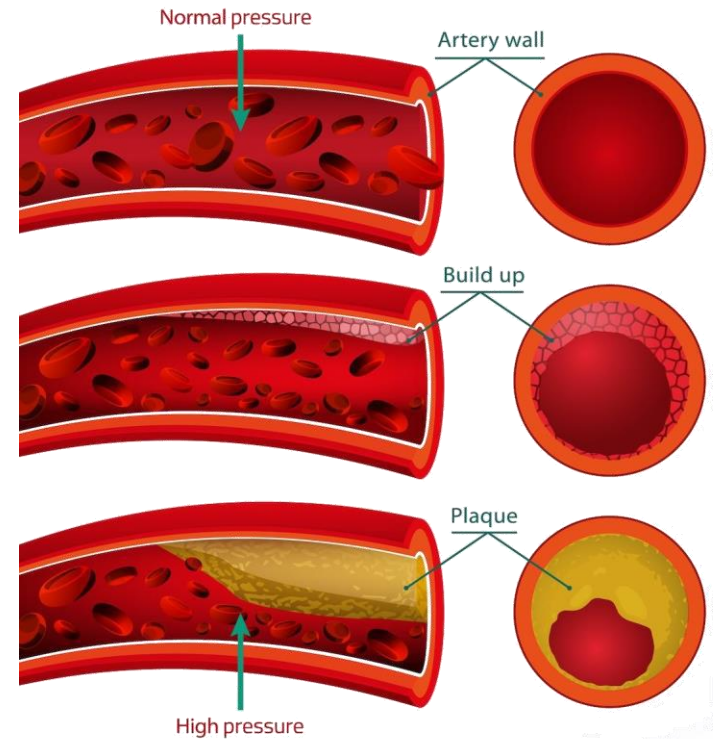
High blood pressure usually has no symptoms so **many people do not realise they have it.**



If left untreated, high blood pressure can lead to serious problems like a heart attack or stroke.



High blood pressure is **one of the top five contributors towards premature death.**



Why are we doing this?



It is estimated that over 170,000 patients in Gloucestershire have high blood pressure.



There are around 55,000 patients in Gloucestershire who may have high blood pressure but **have not been diagnosed**.



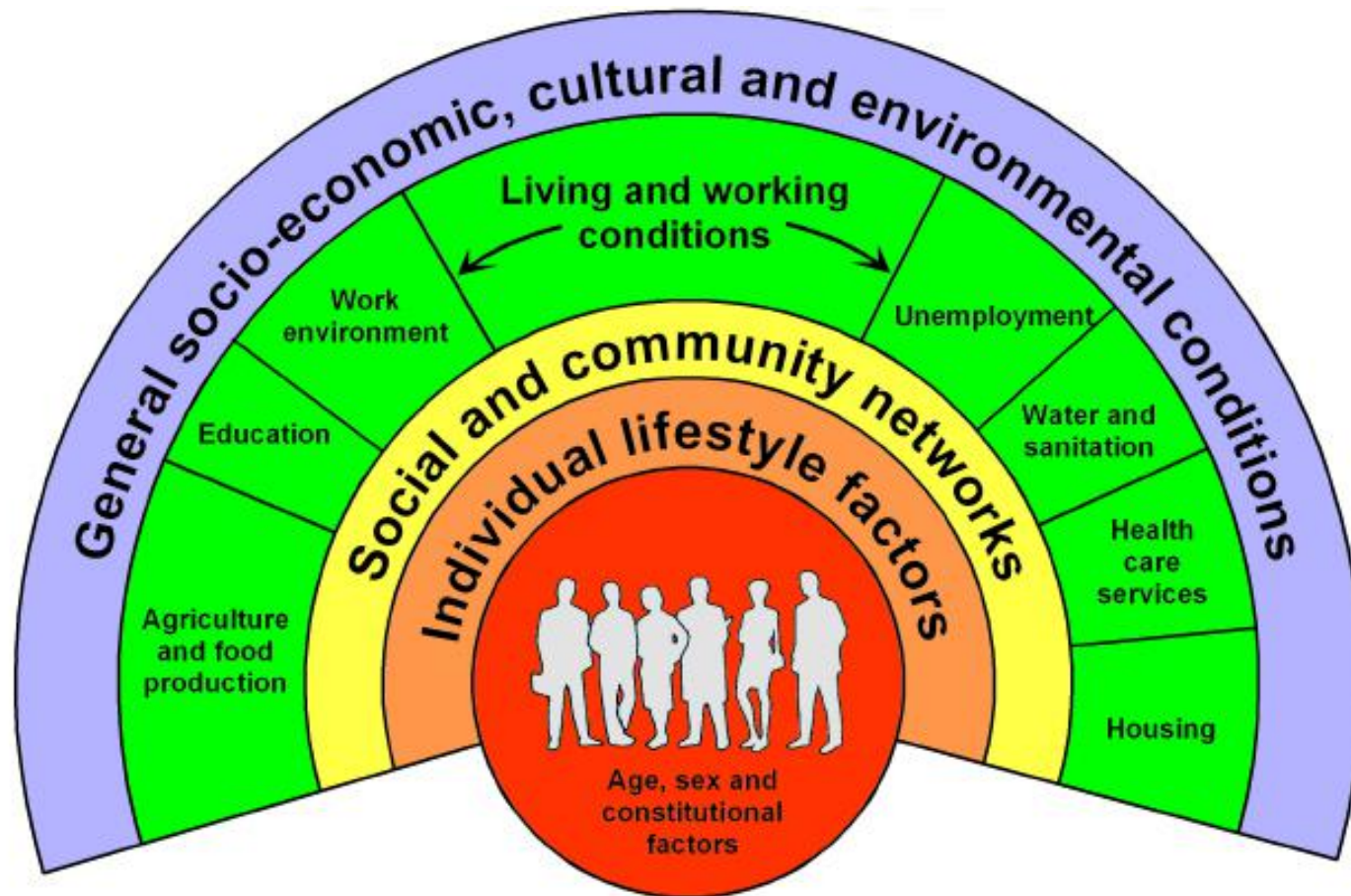
There are around 70,000 patients aged 40+ who have not had their blood pressure checked in the last five years.



There are over 35,000 patients who have been diagnosed with high blood pressure but **aren't treated to target**.



Why are we doing this?



Source: Dahlgren and Whitehead, 1991

What is the opportunity?

This is a one-off funding opportunity. There is no minimum level of funding. We would expect the maximum grant to be around £15,000 but we will consider higher if plans are well developed and partnership working is demonstrated.

Expressions of interest should cover **at least one** of the below criteria but could cover multiple if this is feasible for your organisation. Expressions of interest should also clearly outline which population, or area will be targeted as part of this work.

- 1 Offering blood pressure checks outside of traditional health settings.
- 2 Engaging with communities to talk about blood pressure and understand any barriers that patients face when it comes to diagnosis or treatment.
- 3 Working with communities (particularly at-risk groups) to encourage healthy lifestyles or hypertension medication compliance.

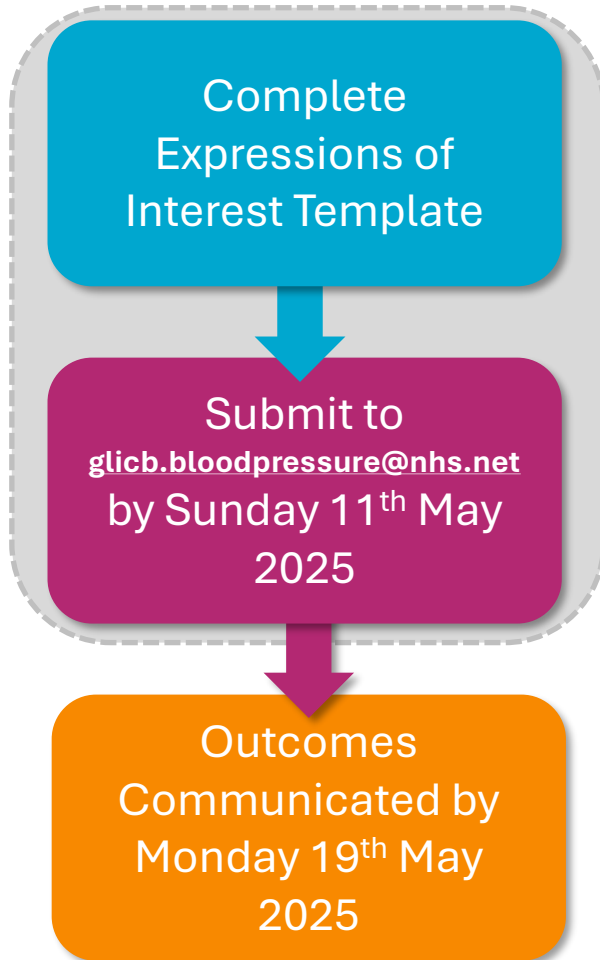
In the event where multiple expressions of interest are received focusing on the same criteria or targeting the same area or population group, we will score organisations based on:

- How embedded the organisation is/ how strong the existing community relationships are with identified target areas or groups; and
- How developed the proposed activity is.

We want to encourage as much creativity as possible as part of this process. We will work with successful organisations on the finer, more clinical details as part of the co-design process.

What are the next steps?

Stage 1



Stage 2



Questions?

If you have any further questions after the webinar, please contact the team at glicb.bloodpressure@nhs.net.

All questions throughout this process will be documented and uploaded to our FAQs document.

REMINDER: The deadline to submit an expression of interest is **Sunday 11th May 2025**.

